

Flameproof Junction Boxes (Ex d)

FC4/5 Junction Boxes

Specifications: FC4 and FC5 Junction Boxes

Classification	IEC 60079-0 IEC 60079-1 IEC 61241-0 IEC 61241-1
Temperature class	T6
Ambient temperature	-20°C to +60°C (+40°C & +55°C)
Approvals	IECEX SIM 07.0001X Ex tD A21 IP 66 SIRA 07ATEX1133X IIC G D
Degree of protection	IP 66
Weight	8 kg / 2.6 kg
Standard finish	Cast aluminum/ Stainless steel hardware

Product



FC4/5



FC15

Maximum Number of Entries Data Table

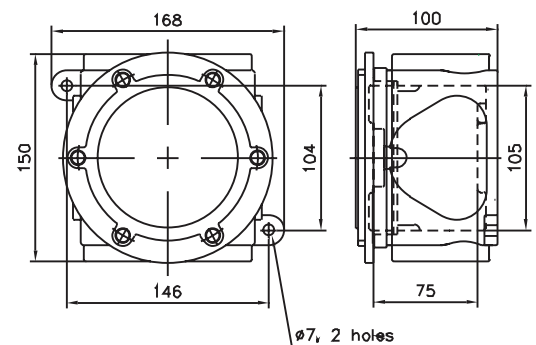
Entry location	M16	M20	M25	M32	M40	M50
Top	4	4	3	2	1	1
Bottom	4	4	3	2	1	1
Sides	2	2	2	1	-	-
Back (optional)	1	1	1	1	-	-

FC15 Junction Boxes

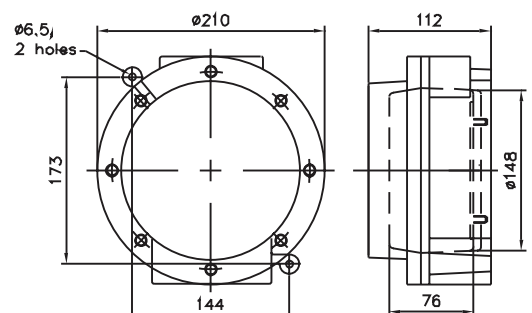
Specifications: FC15 Junction Boxes

Classification	Ex d Group II Zone 1 and 2 Gas group IIB
Temperature class	T6
Approvals	Ex d to AS 2380.2 Aus EX 1260
Degree of protection	IP 66 to AS 1939
Weight	4.2kg - FC 15D 3.5kg - FC 15
Standard finish	Cast Aluminum/ Stainless steel hardware

Drawing



FC4/5



FC15

Maximum Number of Entries Data Table

Entry location	M16	M20	M25
Top	2	2	-
Bottom	2	2	2

This datasheet does not constitute any contract obligation.

Pepperl+Fuchs reserves the right to modify the products herein illustrated without prior notice.

Pepperl+Fuchs Group
www.pepperl-fuchs.com

USA: +1 330 486 0002
pa-info@us.pepperl-fuchs.com

Germany: +49 621 776 2222
pa-info@de.pepperl-fuchs.com

Copyright Pepperl+Fuchs

Singapore: +65 6779 9091
pa-info@sg.pepperl-fuchs.com

PEPPERL+FUCHS
PROTECTING YOUR PROCESS