

Flameproof Junction Boxes (Ex d)

FW Junction Boxes

Specifications: FW Series

Classification	IEC 60079-0 IEC 60079-1
Temperature class	T6
Ambient temperature	-20°C to +60°C (+55°C)
Approvals	IECEX TSA 07.0005X Ex d IIC T6 IP 66 SIRA 07ATEX1132X II2 GD
Degree of protection	IP 66
Weight	600g
Standard finish	Cast aluminum
Accessories	4 way terminal blocks

FW Junction Box Data Table

Type	Layout	Entry size	Number of entries
FW22I		M20	2
FW22L		M20	2
FW23T		M20	3
FW24X		M20	4
FW32I		M25	2
FW32L		M25	2
FW32T		M25	3
FW34X		M25	4

Product



FW22L



FC4

FC4 Junction Boxes

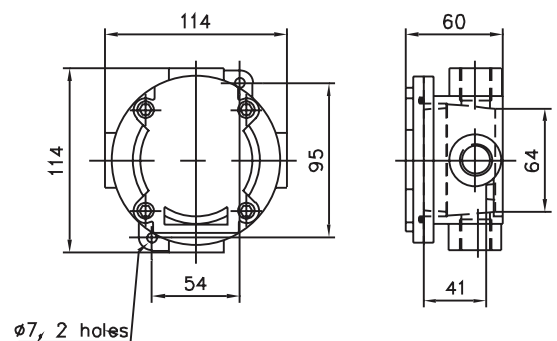
Specifications: FC4 Series

Classification	IEC 60079-0 IEC 60079-1 IEC 61241-0 IEC 61241-1
Temperature class	T6
Ambient temperature	-20°C to +60°C (+40°C & +55°C)
Approvals	IECEX SIM 07.0001X Ex d IIC T6 IP 66 SIRA 07ATEX1133X II2 GD
Degree of protection	IP 66
Weight	1.1kg
Standard finish	Cast aluminum / Stainless steel hardware

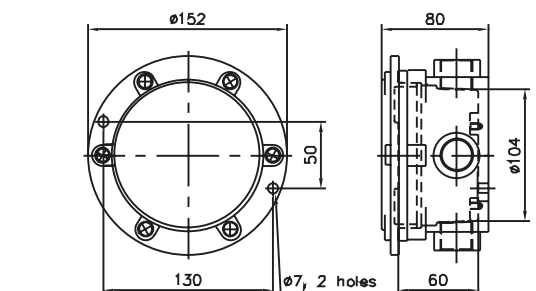
FC4 Junction Box Data Table

Type	Layout	Entry size	Number of entries
FC4 22I		M20	2
FC4 22L		M20	2
FC4 23X		M20	3
FC4 24X		M20	4
FC4 32I		M25	2
FC4 32L		M25	2
FC4 32T		M25	3
FC4 34X		M25	4

Drawing



FW22L



FC4